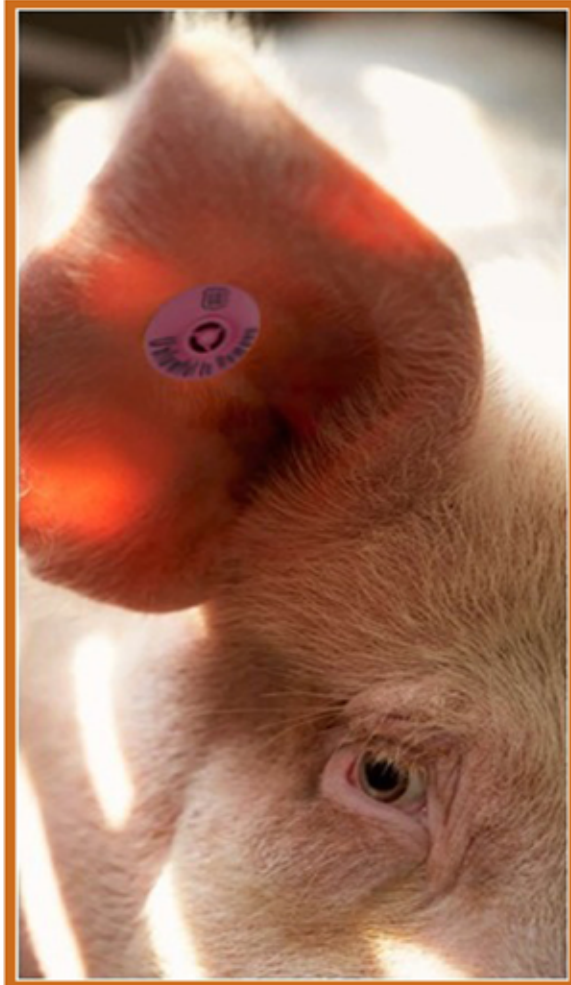


Official USDA Swine Premises Tags



Front



Tamper Proof Button



Back

The Swine Premises Tag consists of a Pink tamper-proof button and a Pink visual panel stud. Each tag carries the official US shield, the assigned alpha-numeric seven character PIN (Premises Identification Number), State postal code of the PIN and a notice stating "Unlawful to Remove". Space is also available on the visual panel for producers wanting to include an individual management number.

Purposes

- Meet USDA and Pork Industry Standards
- Improves Traceback Accuracy, Speed, & Efficiency
- Supports Comprehensive Disease Surveillance Programs

Implementation

- Tags Must Have Premises ID, Shield, and State
- PIN of Last Farm Required
- Tags Must be Applied Prior to Harvest Channel Entry
- Cull Sows & Boars Required to have PIN Tag

Available Colors:



Call Customer Service
1 800 328 0118

The Pioneers of Animal ID
Since 1945